

European disability network meeting

University of Leeds (UK), 7-9 September 2007

DISABILITY RESEARCH in FRANCE

Isabelle Ville, Jean-François Ravaud

INSERM, IFRH, CERMES

Structuring of French Research

French specificity, heritage of history :

↑ **coexistence of two main systems of public research**

National Research Institutes

- EPST : Publicly-owned establishments in Scientific and Technological matter (45 000)
 - ✓ CNRS : National Center for Scientific Research (26 600)
 - ✓ INSERM National Institute for Health and Medical Research (5 200)
 - ✓ INRETS Transportation and safety
 - ✓ INED Demographical Studies
 - ✓
- EPIC : Publicly-owned establishments in Industrial and Commercial matter (19 000)
 - ✓ CEA Atomic energy
 - ✓ CNES National Center for Space Studies
 - ✓ ...

Universities

EPSCP : Publicly-owned establishments in Scientific, Cultural and Professional matter (137 000)

- Universities
- Great establishments
 - ✓ CNAM : National Academy of Arts and Trades
 - ✓ College of France
 - ✓ EHESS : School of the High Studies in Social Sciences
 - ✓ IEP : Institute of Political Studies of Paris (Sciences Po Paris)
 - ✓ ...

DISABILITY RESEARCH in FRANCE

- Different directions
 - Biomedical research
 - including rehabilitation sciences)
 - Human and Social Sciences
 - including disability studies)
 - Engineering and technological Research
 - Including assistive technology
- A French tradition : very few dedicated research units
 - Only one University Chair on disability : Pr E Sampaio (CNAM)
 - CTNERHI : Centre Technique National d'Etudes et de Recherche sur les Handicaps et les Inadaptations
- Disability research
 - Main characteristic : scattering
 - A priority : to federate dispersed forces
- A structuring initiative : the Network IFRH
 - The Federative Research Institute on Disability

Federative Research Institutes

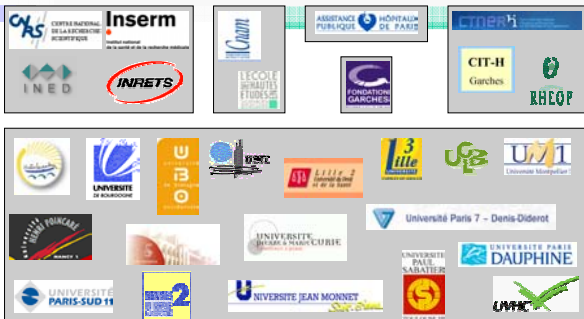
- Partnership research structures inter - organizations
- The Agreement Protocol on IFRs institutes the « Program of IFRs »
 - ✓ signed by Departments of Research, Higher Education and Health, Universities, and the main national research Institutes
 - ✓ in charge of a **typical IFR agreement** that settles the organization and functioning modalities of an IFR, regulates the partnership terms between institutions and organisms of which depend research teams and determines the modalities of creation and evaluation of IFR.
- Multiannual program of IFRs managed by the Department of Research
 - ✓ Strategy
 - Federate research units coming under various institutional partners around a common scientific strategy
 - Scientific policy founded on a synergy between the units of research,
 - Viability of the activity of research, scientific animation, formation
 - Federator scientific projects
 - Social and economic partnerships
 - ✓ Call for projects of IFR : creation and renewing for 4 years
 - ✓ Financing of four-year Support
- About 100 IFRs in France (typically on-site)
- IFR on Disability : the unique network IFR

IFRH : multidisciplinary Network IFR

- Thematic federation
- Multiple locations
- Founded in 1995
- Renewed for 2007-2010
- 26 research teams
- 29 partner institutions
- 14 towns of establishment
- 9 administrative regions



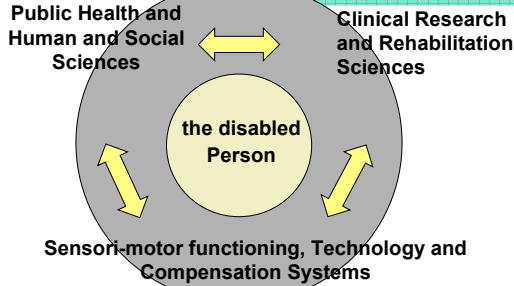
PARTNER INSTITUTIONS of IFRH



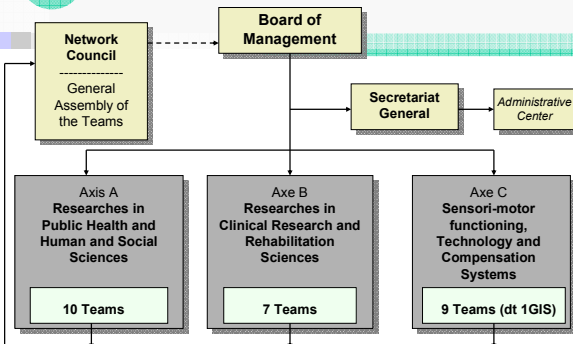
TEAMS and PARTNER INSTITUTIONS

Type of institution	Nb	Partner institutions (number of teams)
National Research Institutes	4	INSERM (9), CNRS (5), INED (1), INRETS (1)
Higher education great institutes	2	CNAM (1), EHESS (1)
Public health institution	1	AP-HP (4)
Universities	18	Bordeaux II (1), Bourgogne (1), Bretagne-Occ. (1), Lille I (1), Lille II (2), Lille III (2), Lyon I (1), Montpellier I (1), Nancy I (1), Paris V (3), Paris VI (3), Paris VII (1), Paris IX (1), Paris XI (1), Rennes II (1), St-Etienne (1), Toulouse III (1), Valenciennes (1)
Non-Profit Organisations	3	CTNERHI (1), RHEOP (1), CIT-Garches (1)
Research Foundation	1	Fondation Garches (1)
Number of partner institutions	29	

Scientific orientations of IFRH



General Organisation



Relationship with Disabled people's organisations

- CNCPH National Consultative Council of Disabled People
 - composition
 - Associations of disabled persons and their families
 - Associations and organisations working in the field of disability
 - Organisations carrying out research in the field of disability
 - Organisations for social protection, Unions, professional organisations for employers, a French MP, a senator, and people representing local authorities, representatives of Ministries
 - Objective
 - to ensure that disabled persons participate in developing and implementing policies that concern them
 - to assess the situation of these people and to come up with recommendations for improving them
 - consultative voice for any project of law or decree relating to disability
- ONFRIH National Observatory on Training, Research, Innovation on Disability (2007)
 - composition
 - Associations of disabled persons and their families, nominated by CNCPH
 - Research institutes and Universities
 - Experts
 - objective
 - To appreciate how is taken into account disability in research programs
 - Recommendations about research needs

SOME RECENT COLLECTIVE BOOKS of IFRH



Editorial Activity

- HANDICAP
 - Revue de Sciences Humaines et Sociales in French
 - Published by CTNERHI
 - last issue 2005
- **Creation of ALTER**
 - European Journal of Disability Research
 - First issue November 2007
 - New peer-reviewed journal, English/French
 - Alter and IFRH
 - Publisher : Elsevier



French Disability Research

In Social Sciences : 3 general orientations

- Social epidemiology : social inequalities, life conditions
↳ **quantitative methods : National Surveys**
- Historical and socio-political analysis
↳ **Qualitative methods : analysis of legal texts, specialised literature...**
- Representations and meaning of disability experiences
↳ **Qualitative methods : narrative analysis, ethnographic observations**
